



Salt Lake City School District Reopening Plan

7-30-2020

Exhibit: 2C1b
Board Meeting: 7/30/2020



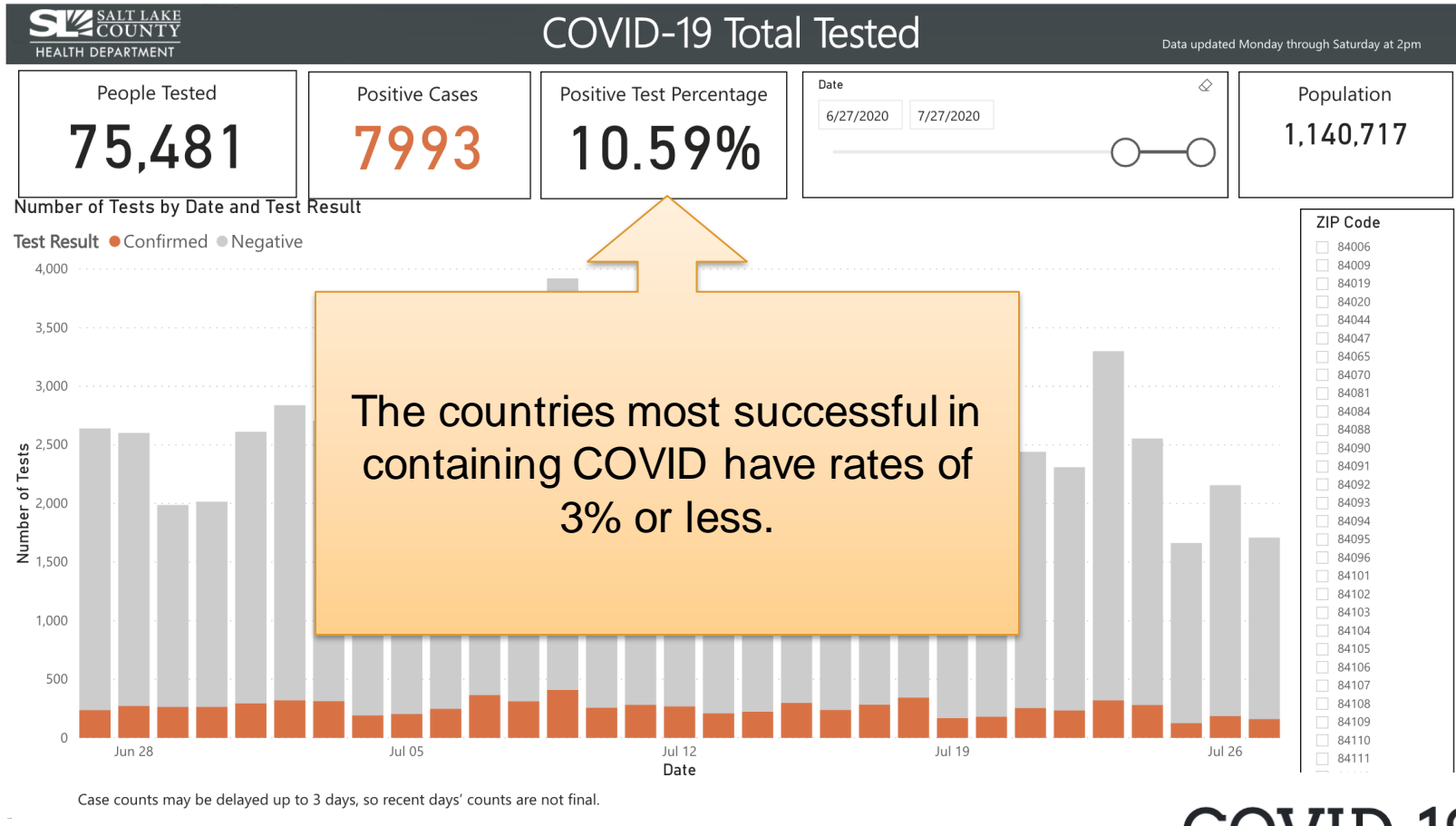
Our Goals

- Provide quality learning while maintaining the safety of our community.
- Take steps that will allow us to open and remain open as soon as it is safe.

Data Informs Good Decisions

Test Positivity Rate: Salt Lake County

COVID-19 Data Dashboard



COVID-19 Data Dashboard

<https://slco.org/health/COVID-19/data>

Data Informs Good Decisions

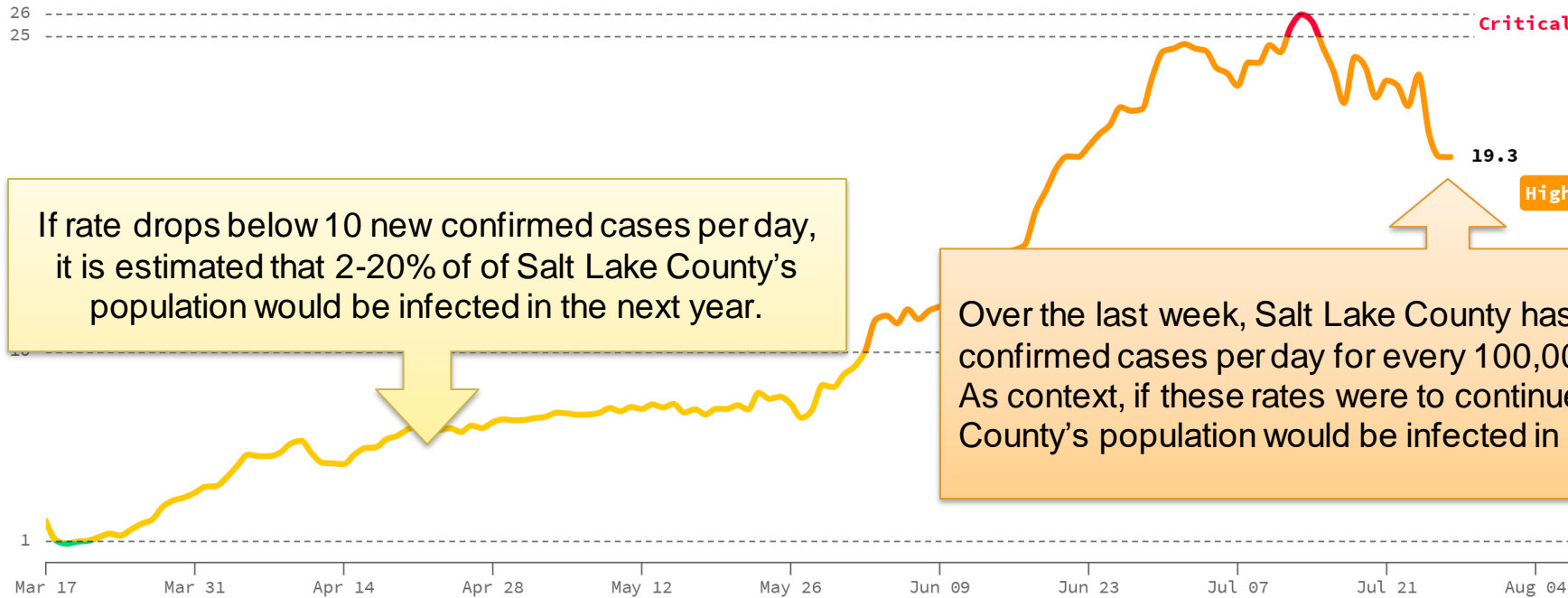
Daily New Cases: Salt Lake County

SALT LAKE COUNTY, UTAH

Daily New Cases Per 100k Population

Last updated July 28, 2020

Generated by
CovidActNow.org



If rate drops below 10 new confirmed cases per day, it is estimated that 2-20% of Salt Lake County's population would be infected in the next year.

Over the last week, Salt Lake County has averaged 19.3 new confirmed cases per day for every 100,000 residents. As context, if these rates were to continue, 20-50% of Salt Lake County's population would be infected in the next year.

https://covidactnow.org/us/UT/county/salt_lake_county

The Proposal

- Students start on September 8th.
 - August 18 – 24
 - Professional learning and planning for teachers
 - August 25 – Sep. 4
 - Assessments, small groups, meet students
 - Make sure technology is in place
- Students begin with remote learning.
- Change in learning environment would occur at a mid-term or end of quarter.

Main Criteria for Transitioning to Hybrid Scenario

Positive Test Percentage Below 5% in Salt Lake County

- Based on the rolling average of the past 7 days
- Maintained for 7 consecutive days

Daily New Cases in Salt Lake County/100k Population Less than 10 cases

- Based on the rolling average of the past 7 days
- Maintained for 7 consecutive days

Remote Learning Will Look Different

Easier to find resources

- Every teacher has a Canvas classroom and available resources can be linked within Canvas
- Train families in accessing Canvas

Scheduled time with teachers

- Students will have scheduled, live, online sessions with their teachers

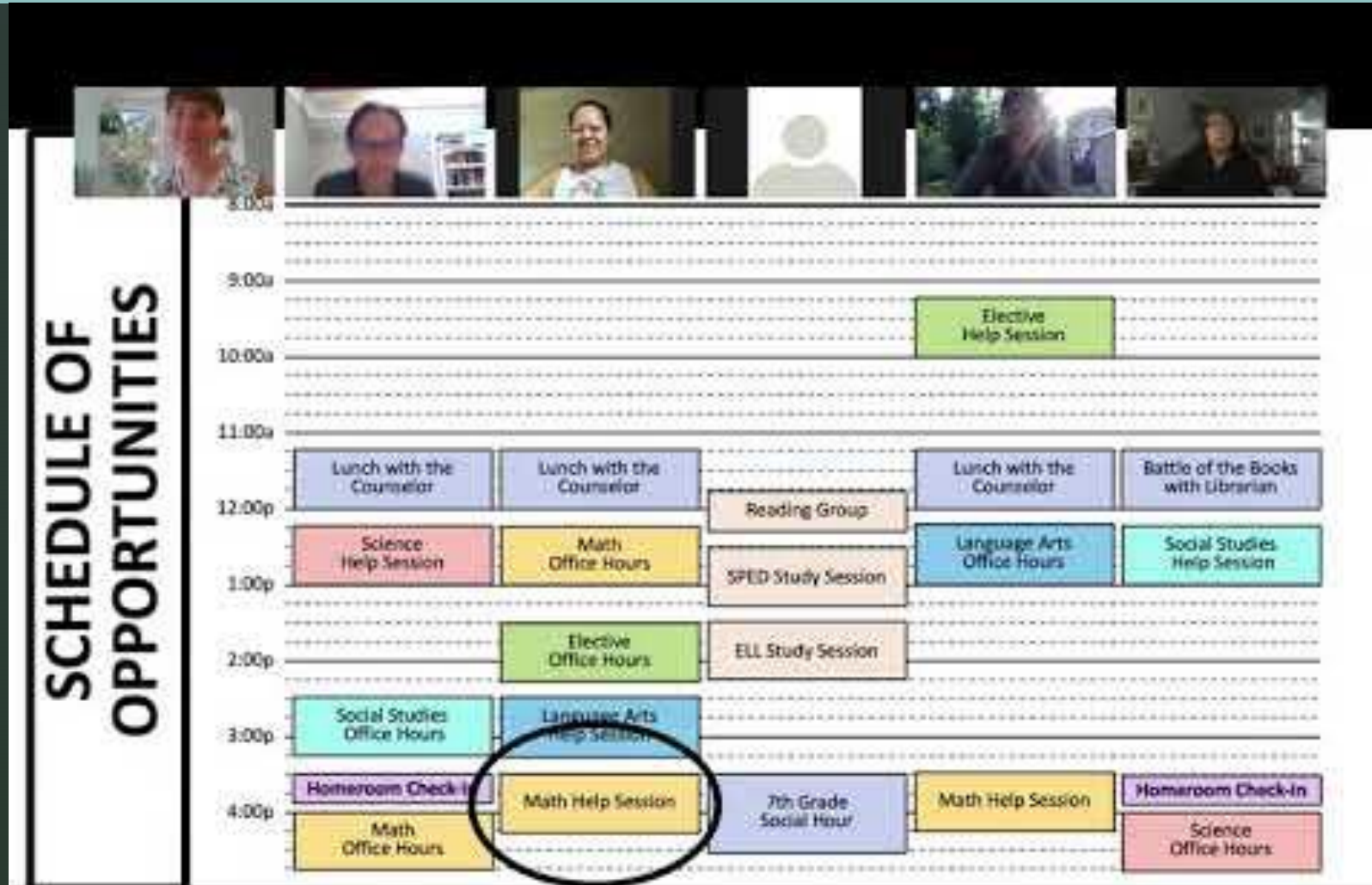
More support

- District resources and scheduled online support (help sessions, office hours, counseling resources) will provide academic and emotional help

Student Well-Being

- Counselors and/or social workers in every building to assist with Social Emotional Learning lessons, relationship building, mindfulness, restorative practices, trauma-informed practices, and mental health supports
- Provide a blended model of support, inclusive of in-person and virtual deployment of mental health services
- Site specific activities – lunch groups, socials, games

Student Schedule Example



Click here to play [video](#)

Special Education and 504 Students

- Flexibility in scheduling students based on individual needs.
- Student schedules and remote learning services will be driven by student need as outlined on IEPs and 504 plans.
- Remote learning will be available for students unable to access in person services due to medical concerns.
- IEP and eligibility meetings will continue to be held online or in person, when it is safe to do so.

Technology

- 12,798 laptops ready for distribution
- 2,000 laptops on order (Oct 2020)
- 1,000 iPads
- 200 hotspots on hand; 400 on order
- Foundation is working with Comcast to provide additional connectivity options
- 10 mobile hotspot units that can be placed on buses or in buildings
- 8 schools where WiFi is accessible in parking lots; 5 additional schools to expand exterior WiFi

Professional Development

Canvas

- 900+ participated in basic Canvas training
- 400+ participated in intermediate and/or advanced training

Kagan training for school teams

- 300 teachers and administrators in Cooperative and Engaging Learning online

PLCs at sites through summer



A Sampling of Professional Learning This August

- Canvas (Beginning, Intermediate, and Advanced)
- Live team planning to use priority standards and content efficiently and effectively in a remote or hybrid classroom
- Organizing learning in a hybrid or remote learning environment
- Best practices for building community online
- Zoom for remote, live-and-in-person teaching with students
- Teams for groups and discussions
- Newsela (NEW! [What is Newsela?](#)) K-12
- Social emotional learning
- Literacy: Personalizing Lexia for students K-12
- Math: Eureka in Sync (NEW! Virtual manipulatives to support student work, downloadable, fillable PDFs of assignments, and more) K-6
- Math: Eureka Equip (NEW! Assessment reporting that provides recommendations organized both by individual student and the whole class) K-6
- FlipGrid
- SeeSaw (K-2, SpEd)
- Mystery Science (NEW! Online science instruction that is tied to the SEEd standards) K-5
- NearPod
- Common Lit (online literature and informational text, lessons, scaffolded supports) 9-12
- Using Sora for online reading K-12

Ready to Return

- Cloth masks for every staff member and student
- Plexiglas barriers are in areas where staff will interact with the public
- Face shields are available for any employee
- Every classroom will have disinfectant
- Hand sanitizer dispenser(s) (school entrance, playgrounds, every classroom)
- Individual student desk plexiglass barriers



Ready to Return

- HVAC systems adjusted to ensure 100% of air will be cycled daily
- Water bottles will be provided to each student and touchless filling stations in all schools
- Classrooms organized to align with social distancing standards



In Support of Our Families

- Breakfast and lunch options available
- District family support hotline
- Emergency food resources
- Access to medical care and mental health care
- Clothing and furniture
- Transportation needs
- Emergency gift cards
- Medical and CHIP enrollment support
- Dental and vision support

Let's get back to school!

- We call on everyone to help us get there!
- Utah Moonshot – 55
 - Wear Masks
 - Social distance
 - Isolate as needed
 - Reopening plan ([link](#))
 - FAQ ([link](#))